

ARGENTARIO RIVESTIMENTI TESSUTO / FABRIC UPHOLSTERY

CATEGORIA/CATEGORY B

TESSUTO POLIPROPILENE IGNIFUGO



B23 Arancione

Reazioni al fuoco - Fire resistance*:
UNI9175 Class 1
BS 5852 Crib N°5
EN 1021 Part 1-2
Calif.Bull.117 June 2013
*Will also pass other flammability standards.
Flame retardant performance is dependent upon the foam used.

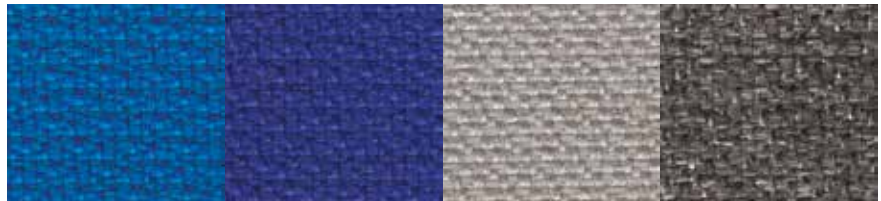


B28 Rosso

B26 Bordeaux

B22 Verde chiaro

B21 Verde



B27 Blu

B20 Blu scuro

B30 Grigio

B25 Grigio scuro

Composizione - composition:
100% Polipropilene FR - polypropylene FR

Peso - weight:
350 ± 5% g/lm

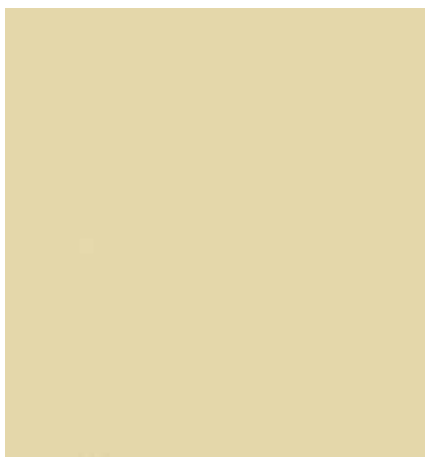
Martindale:
>50.000 cicli - cycles



B18 Nero

CATEGORIA/CATEGORY B

COVENTRY



B33 Beige

Reazioni al fuoco - Fire resistance*:
UNI 9175:1987
UNI9175-FA 1:1994
BS 5852-1:1979
BS5852-2:1979
EN 1021:2014
*Will also pass other flammability standards.
Flame retardant performance is dependent upon the foam used.



B11 Terra

B12 Giallo

B13 Rosso

B14 Bordeaux



B15 Verde scuro

B16 Blu

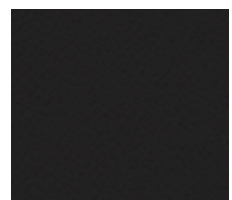
B17 Grigio

B19 Bianco

Fireproof version
Composizione - composition:
82% PCV
7% Cotone - cotton
11% Poliestere - polyester

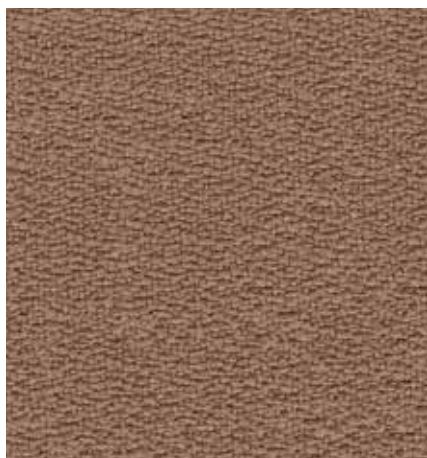
Peso - weight:
565 g/m² ± 5%

Martindale:
> 50.000 Cicli - cycles



B32 Nero

CATEGORIA/CATEGORY C
TESSUTO CREP MIRAGE



C01 Terra

Reazioni al fuoco - Fire resistance*:

UNI9175 Class 1
 EN ISO 6940/6941:
 BS 5852 Crib N°5
 B1 DIN 4102
 EN 1021 Part 1-2
 EN 13773 Burning Behaviour: Class 1
 EN 13501-1 esp 1,2
 Calif.Bull.117 June 2013
 Fire Protection Classification: 5.3
 FAR.25853 Classification: yes
 M1 + NF D 60-013:2006 AM18
 B1 - OENORM 3800 PART 1 + OENORM B3825
 Azimut
 MED/3.19 MED/3.21: Draperies, Curtains and Bedding comp.
 MED annex A.1 item:A.1/3.20 Upholstered Furniture
 *Will also pass other flammability standards.
 Flame retardant performance is dependent upon the foam used.

Composizione - composition:

100% Poliestere FR (trevira CS) - polyester

Peso- weight

460 ± 10% g/lm

Martindale:

100.000 ± 20% Cicli - cycles



C02 Giallo

C03 Arancio

C05 Mattone



C04 Amaranto

C20 Prugna

C21 Bordeaux



C70 Turchese

C71 Verde chiaro

C06 Verde scuro



C07 Azzurro

C08 Blu

C72 Marrone

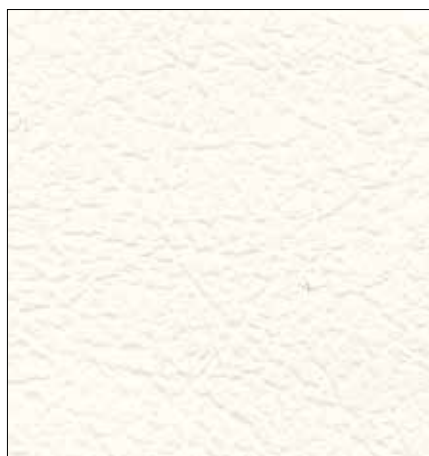
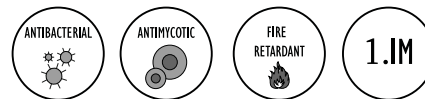


C73 Grigio chiaro

C09 Grigio

C10 Nero

CATEGORIA/CATEGORY C HAPPY



C22 Bianco / White

Reazioni al fuoco - Fire resistance*:

UNI 9175: 1987

UNI 9175/FA1: 1994

IMO RES A 652 (16): 1989

FTP CODE Annex 1 Part 8

*Will also pass other flammability standards.

Flame retardant performance is dependent upon the foam used.

Composizione - composition:

88% PVC

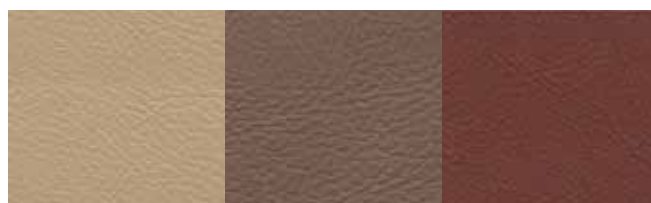
12% poliestere - polyester

Peso- weight:

550 ± 50 g/mq

Martindale:

50.000 cicli- cycles



C23 Beige

C24 Terra

C64 Amaranzo



C61 Mandarino

C25 Arancio

C26 Rosso



C50 Bordeaux / Bordeaux

C60 Verde / Green

C62 Lime / Lime



C28 Blu / Blue

C29 Grigio / Gray

C74 Blu scuro



C63 Grigio chiaro

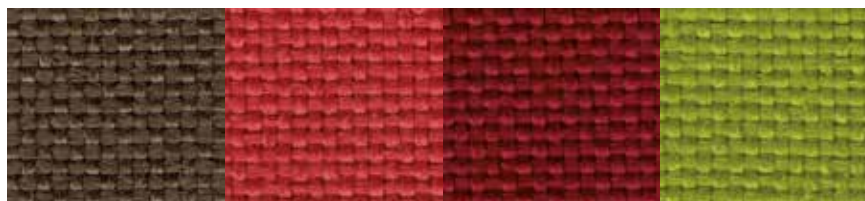
C30 Grigio scuro

C31 Nero

CATEGORIA/CATEGORY E TREVI U



618 Marrone



605 Marrone

608 Rosso

610 Bordeaux

612 Verde



607 Verde scuro

604 Blu

602 Blu scuro

606 Grigio

Reazioni al fuoco - Fire resistance*:

UNI 9175 Class 1

M1

BS 5852 Crib N°5

B1 DIN 4102

EN 1021 Part 1-2

EN 13501-1 esp 1,2

Calif.Bull.117 June 2013

FAR.25853 Classification: yes

Azimut

MED/3.19 MED/3.21: Draperies, Curtains and Bedding comp.

MED annex A.1 item:A.1/3.20 Upholstered Furniture

*Will also pass other flammability standards.

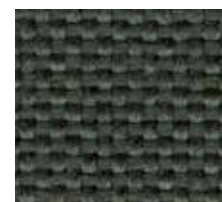
Flame retardant performance is dependent upon the foam used.

Composizione - composition:

100% poliestere FR- polyester FR (trevira CS)

Peso - weight: 630 ± 5% g/lm

Martindale: 1 50.000 ± 20% cicli - cycles

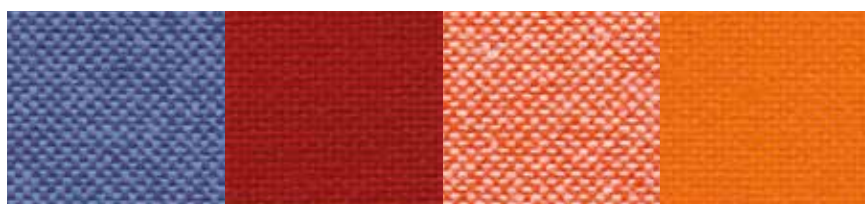


600 Grigio scuro

CATEGORIA/CATEGORY E JET



E85 Blu



E85 Blu melange

E79 Rosso

E80 Rosso melange

E81 Arancio



E82 Verde melange

E83 Verde oliva

E33 Sabbia

E84 Grigio

Reazioni al fuoco - Fire resistance*:

UNI 9175 Class 1

UNI 9174 - 8456 Class C1

DIN 4102 Class B1

NF 92501-7 Class M1

NF D 60013 Class AM18

EN 1021-1 & 2

BS Crib 5

BS 7176 Class Medium Hazard

EN 13773 Class 1

OENORM 3800-1 Class B1,Q1,TR1

California TB117

USA NFPA 701

USA NFPA 260

IMO Part 8 Upholstery

*Will also pass other flammability standards.

Flame retardant performance is dependent upon the foam used.

Composizione - composition:

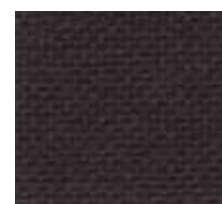
100%Poliestere (Trevira CS) - polyester

Peso - Weight

365 ± 5% g/lm

Martindale:

65.000 ± 10% cicli - cycles



E39 Nero

CATEGORIA/CATEGORY E FENICE



E01 Sabbia



E02 Giallo

E03 Arancio

E04 Rosso

E05 Bordeaux



E06 Marrone

E07 Mattone

E08 Blu

E09 Grigio

Resistenza al fuoco - fire resistance*:

UNI9175 Class 1

BS 5852 Crib N° 5

EN 1021/1-2

Calif. Bull. 117 June 2013

*Will also pass other flammability standards.

Flame retardant performance is dependent upon the foam used.

Composizione - composition:

75% lana - wool

25% poliammide - polyamide

Peso- weight:

500 ± 7% g/lm

Martindale

1 00.000 ± 20% cicli - cycles



E10 Nero

CATEGORIA/CATEGORY E LOVE



E68 Champagne



E40 Salmone

E41 Rosa

E42 Vinaccio

E43 Cuoio



E44 Terra

E45 Petrolio

E46 Zaffiro

E47 Oceano

Resistenza al fuoco - fire resistance*:

BS 5852 PART1

EN 1021-1

*Will also pass other flammability standards.

Flame retardant performance is dependent upon the foam used.

Composizione - composition:

100% Poliestere - polyester

Peso- weight:

520 g/lm

Martindale:

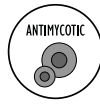
>100.000 cicli - cycles



E48 Grigio chiaro

E49 Blue chiaro

CATEGORIA/CATEGORY E ALL ROAD



E78 Panna

Resistenza al fuoco - fire resistance*:

UNI9175 Class 1

EN1021/1 - 2

BS 5852 Crib N° 5

*Will also pass other flammability standards.

Flame retardant performance is dependent upon the foam used.

Composizione - composition:

84% PVC

16% cotone - cotton



E69 Sabbia

E70 Giallo

E71 Rosso

E72 Bordeaux



E73 Oliva

E74 Blu

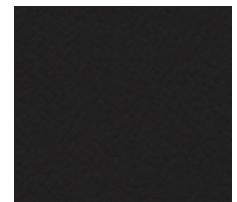
E75 Blu scuro

E76 Grigio

Peso - weight
120 g/lm ± 5%

Martindale:

≥150,000 cicli - cycles



E77 Nero

CATEGORIA/CATEGORY G DISCO COEX BY CHIOCCARELLO



G94 Panna

Resistenza al fuoco - fire resistance*:

UNI 9175 Class 1

EN 1021-1:2006

EN 1021-2:2006

CRIB 5

TB 117:2013

IMO

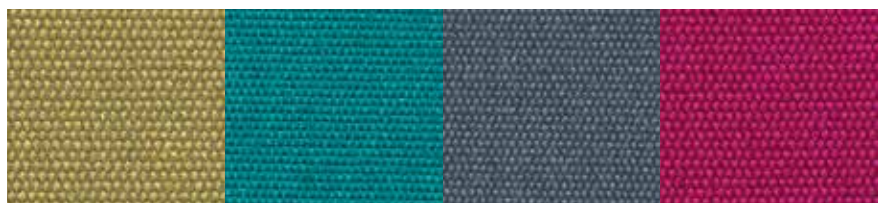
*Will also pass other flammability standards.

Flame retardant performance is dependent upon the foam used.

Composizione - composition:

70% cotone - cotton

20% acrilico - acrylic



G85 Muschio

G86 Petrolio

G87 Denim

G88 Fucsia



G89 Sabbia

G90 Terra

G91 Grigio chiaro

G92 Grigio scuro

5% viscosa - viscose
5% lino - linen

Peso - weight
430 g/m² ± 15

Martindale:

50,000 cicli - cycles

COEX® è l'unica tecnologia brevettata 100% naturale, basata sulla molecola della cellulosa, che rende totalmente ignifuga qualsiasi fibra di origine vegetale.



G93 Carbone

CATEGORIA/CATEGORY G CLASS BY FIDIVI



G53 Casablanca

Resistenza al fuoco - fire resistance*:
 UNI 9175 Class 1
 UNI 9174 - 8456 Class C1
 DIN 4102 Class B1
 NF 92501-7 Class M1
 NF D 60013 Class AM18
 EN 1021-1 & 2
 BS Crib 5
 BS 7176 Class Medium Hazard
 EN 13773 Class 1
 OENORM 3800-1 Class B1,Q1,TR1
 California TB117



G70 Dubai **G51** Abu Dhabi **G50** Moscow **G71** Yoshino



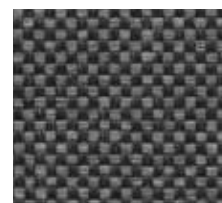
G58 London **G72** Ibiza **G54** Dublin **G55** Seattle

*Will also pass other flammability standards.
 Flame retardant performance is dependent upon the foam used.

Composizione - composition:
 100%Poliestere (Trevira CS) - polyester

Peso - Weight
 600 ± 5% g/lm

Martindale:
 75.000±10% cicli - cycles



G59 Milano

CATEGORIA/CATEGORY G MEDLEY BY GABRIEL



G73 Lime

Resistenza al fuoco - fire resistance*:
 BS EN 1021 1&2
 BS EN 1021-1
 BS 476 Part 7, class 2
 Class Uno UNI 9174 - UNI 8457
 ÖNORM A3800-B2-B3825-Q1 UK
 CA TB 117-2013
 ASTM E 84 Class I
 *Will also pass other flammability standards.
 Flame retardant performance is dependent upon the foam used.



G74 Mostarda **G75** Salmone **G76** Geranio **G77** Mattone

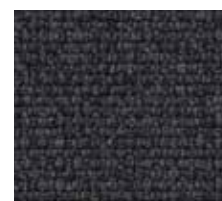


G78 Verde smeraldo **G79** Petrolio **G80** Cielo **G81** Fumo

Composizione - composition:
 100%Poliestere - polyester

Peso - Weight:
 510 g/lm

Martindale:
 75, 000 cicli - cycles



G83 Carbone

CATEGORIA/CATEGORY L CAPTURE BY GABRIEL



L16 Prugna

Reazioni al fuoco - Fire resistance*:

UNI 9175 Class 1

BS EN 1021 1&2

BS 5852 Part 1 0,1

CA TB 117-2013

*Will also pass other flammability standards.

Flame retardant performance is dependent upon the foam used

Composizione - composition:

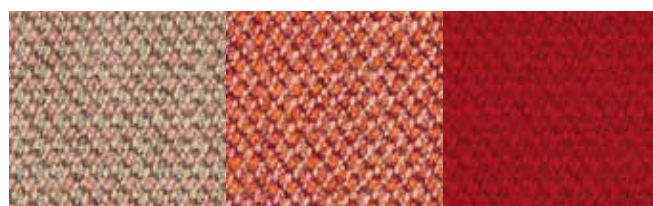
85% lana della Nuova Zelanda - New Zealand wool

15% poliammide - polyamide

Peso - Weight

475g/m

Martindale: 200.000 cicli - cycles



L01 Salmone

L03 Arancio

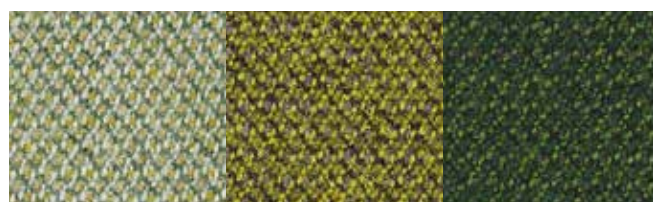
L03 Rosso



L04 Sabbia

L05 Caramello

L06 Noce



L07 Salvia

L08 Salvia

L09 Abete



L10 Cielo

L11 Indaco

L12 Denim



L13 Grigio chiaro

L14 Grigio scuro

L15 Carbone

CATEGORIA/CATEGORY P POLO



P26 Mandorla

Reazioni al fuoco - Fire resistance*:
British standard BS 5852 Part I (1979)
Imo FTP: Part 8-Resolution A.652 (16)
TB 117-A11@2013:2013
*Will also pass other flammability standards.
Flame retardant performance is dependent
upon the foam used.

Spessore - Thickness
0,9/1,0 mm

Origine animale - Origin
Bovine - Raw Hides

Peso - weight
120 g/lm ± 5%

Martindale:
≥ 50,000 cicli - cycles



P11 Bordeaux

P12 Rosso

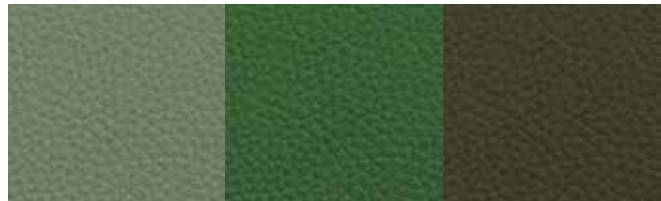
P13 Nocciola



P14 Beige

P15 Tortora

P16 Castagno



P17 Salvia

P18 Abete

P19 Sottobosco



P20 London Sky

P21 Petrolio

P22 Blu



P23 Bianco

P24 Grigio chiaro

P25 Nero