

# CM

Rete  
Mesh  
Résilie



Composizione / Composition / Composition  
**58% Poliestere / Polyester / Polyester**  
**42% Polielastomero / Polyelastomeric / Polyélastomère**



Peso / Weight / Poids  
**330 g/m<sup>2</sup>**

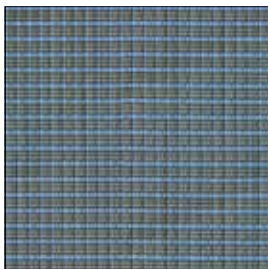


Resistenza al sole / Light fastness /  
Résistance à la lumière  
**5 (UNI EN ISO 105-B02)**

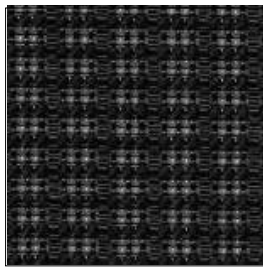


Resistenza allo sfregamento /  
Fastness to rubbing / Solidité au frottement  
**>100.000 Martindale cycles**

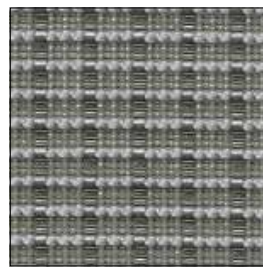
Manutenzione / Maintenance / Entretien  
**Aspirare regolarmente /**  
**Vacuum regularly /**  
**Aspirer régulièrement**



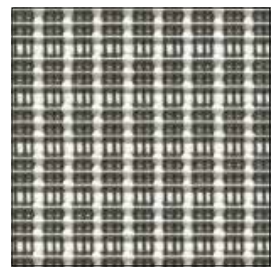
**CM 0700**



**CM 0900**



**CM 0800**



**CM 0600**