



**Sweet  
home.**





It is common for work environments to be noisy and chaotic, which reduces productivity and creativity.

We have designed a cozy space where you can work with focus and provide you with a quiet working environment.



# Concentration space

Optimized for work, reading, or studying.  
Enhance the productivity of your tasks.

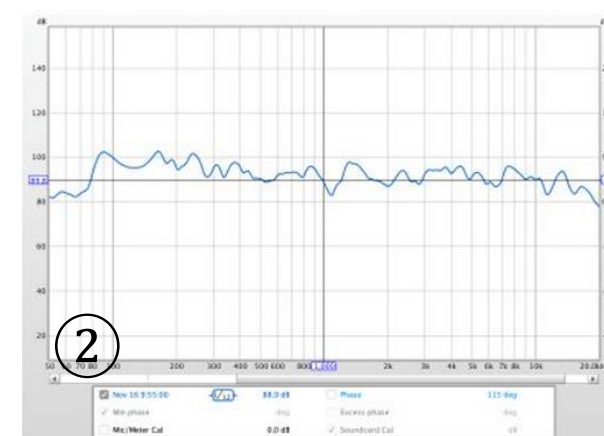


Acoustic insulation: STC: 25dB ( $\pm 3$ dB)

Reverberation time: 0.25s ( $\pm 0.1$ s)

Create an ideal working environment and a space for concentration, with warm colors and a combination of suitable acoustics and lighting to unlock your potential.

# Acoustic parameters

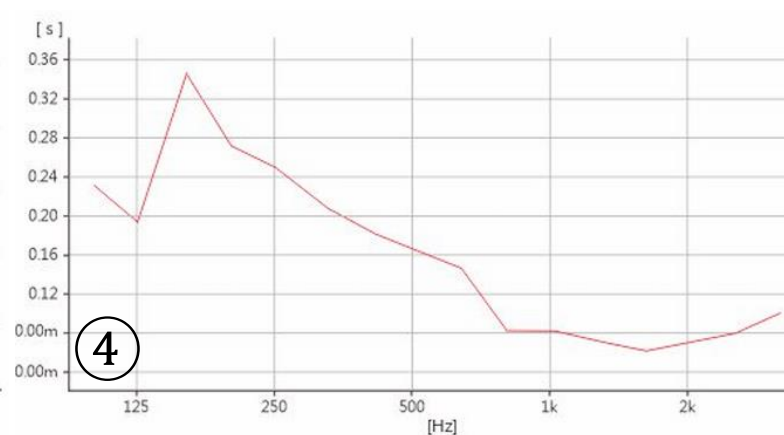
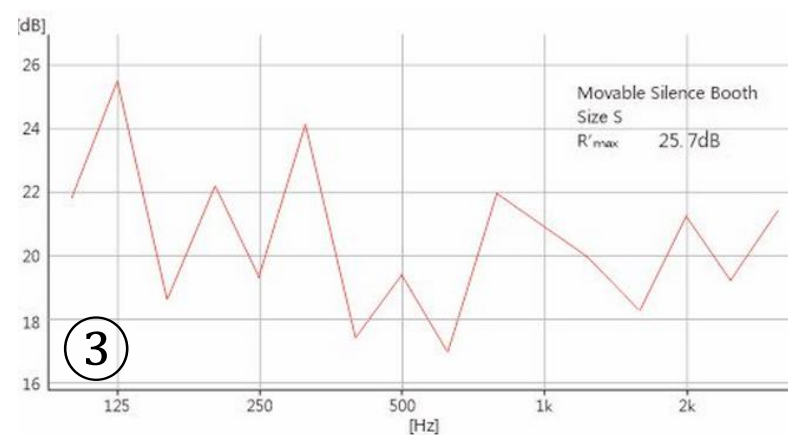


Speech intelligibility ①

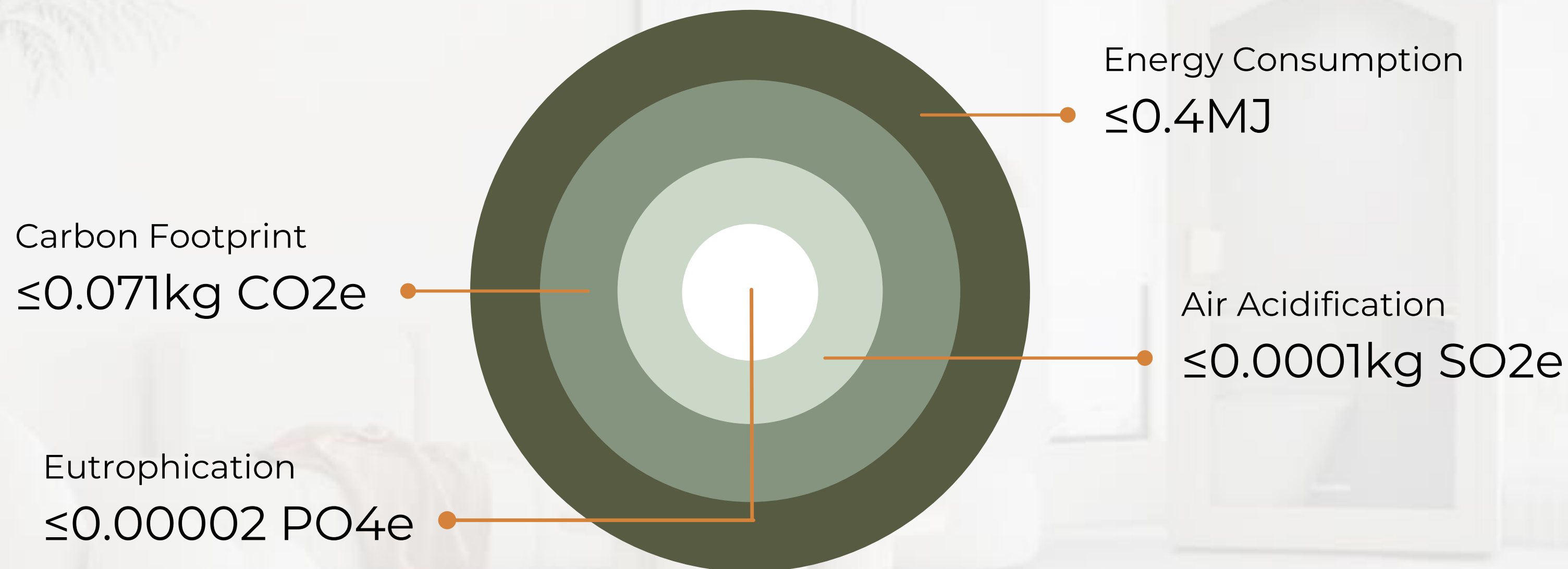
Frequency response ②

Reverberation time ③

Acoustic insulation test ④



# ECO Friendly







The Sweet Home can be moved within minutes; with the leveling legs, it allows the wheels to take control and move wherever you desire.

The wheels securely adjust to the steel panel base, supporting a load of 100 kg.

# Dynamics



Move wherever you want easily



We have considered every element of the Sweet Home, from the best acoustic technology to flexibility and safety.

Every detail has been taken into account, complementing the interior design aspirations of our customers. Once the material is unloaded on-site, installation can be completed within 30 minutes.

# Easy to Install







In Sweet Home, sits a **mini sofa**, meets ergonomic standard. An organically curved task **height adjustable desk** compliments it. Upgrade door handle is more comfortable to open/close.

**Eye-protection lamp, directional lighting bar** and singular **110-220v power socket with USB** will be reading, writing, working required.

The **PIR motion sensor** will help save on power. It automatically turning off the power after 5 minutes of not being occupied.

Brand-new **turbo fresh air system**, revolving speed up to 1500rpm, ventilatory efficiency  $>30\text{m}^3/\text{h}$ .

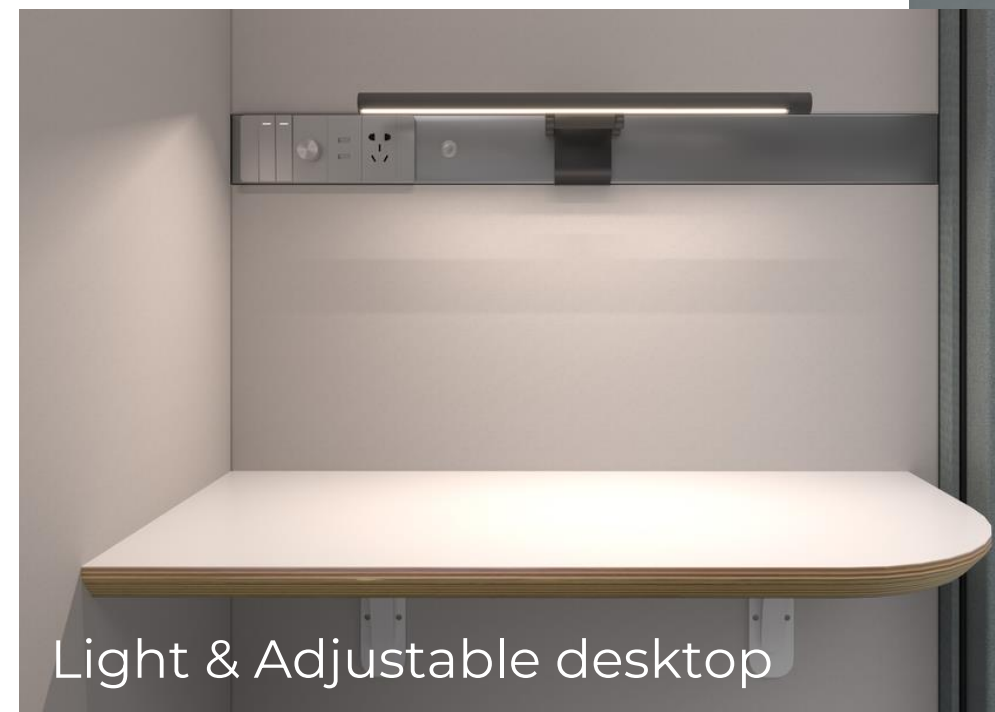
# Furniture



Turbo fresh air system



Door handle



Light & Adjustable desktop



Ventilation system



Pod aerial view



# Finishes

## External Finish

- Made of 3 types of boards: 5mm carbon polymer panels on both side and the back, 30mm honeycomb panels on the top;
- Use 6063-T5 aviation aluminum door frame;
- Overall cladding technology-sound-insulation cloth;
- Support by 15+15mm carbon polymer panels & steel frame at the bottom, equipped with movable wheels

## Interior Finish

- Material 9mm thick polyester fiber sound absorption panel + wrap technology acoustic fabric;
- Furniture height adjustable birch solid wood multi-layer board desktop (desktop height can adjust 700 to 750mm from the base panel), desktop size W760\*380\*30mm. Mini Sofa made of polymeric sponge and polyester fabrics.



**External size** W1100\*D900\*H2100MM

**Internal size** W1000\*D800\*H1960MM

**Package size** W2210\*D630\*H1280MM

**Weight** Gross Weight246KG, Net Weight198KG

**Load-bearing** 100KG







### Lighting

4000K (150Lx) Daylight LED lighting bar on the top brightness adjustable, 3.5W 170LM; Reading lamp adopts 3000K to 6500K Daylight LED light, 5W 160LM

### Ethernet connection

Built-in network connection to connect your laptop directly to the router for uninterrupted meetings without interruptions.

### Door

6063-T5 aviation aluminum frame, 3mm+3mm super white laminated acoustic glass.

### Hinges

Concealed heavy-duty hinges.

### Ventilation volume

>30 m<sup>3</sup> fresh air circulated every hour, equipped with Turbo fresh air system, fan revolving speed 600 to 1500rpm.

### Motion sensor

Infrared human body induction, power off 5 minutes later after people leave.

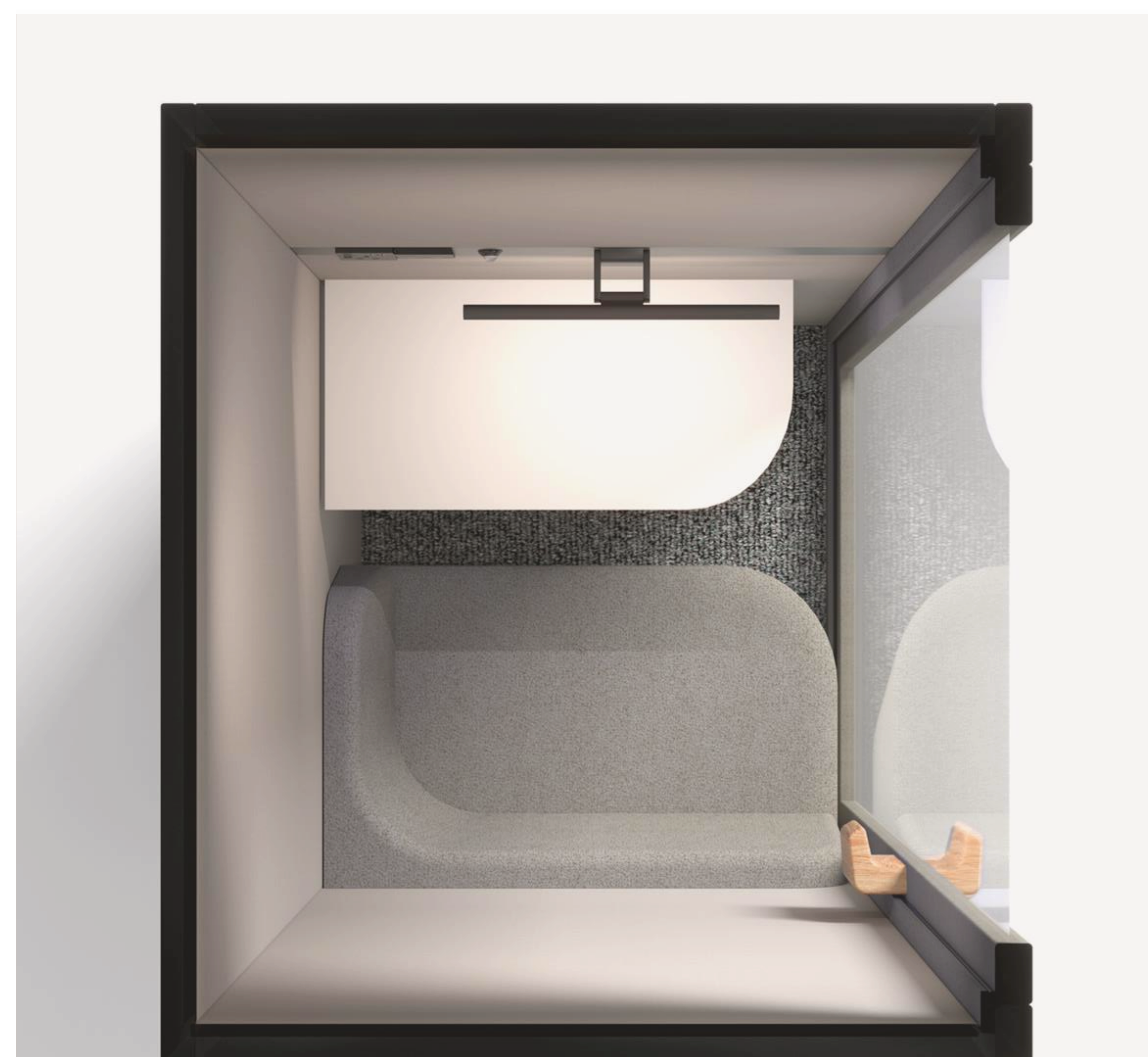
### Power socket

The number of sockets in home pod can meet daily usage needs (five holes sockets with USB).

### Sound Insulation & Speech Intelligibility

25dB(±3dB) & RT0.25s (±0.1s).

>0.76 STI A+ recording room level.







Beige



Anthracite grey



Grey

# Available colors

The interior of all 3 models will be light gray. Warm colors enhance concentration.